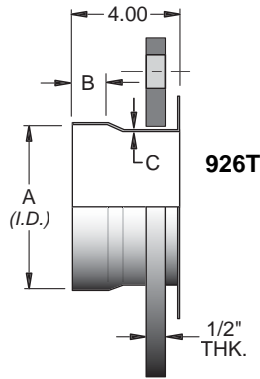


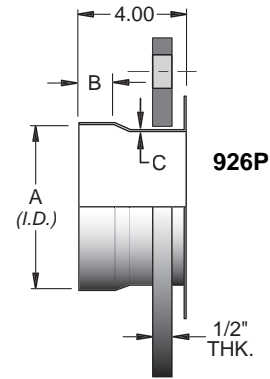
926T - VANSTONE FLANGES (TUBE SIZE)

125-150# ANSI FLANGE, 1/2" THK. PER B16.5 SPECS.
T-321 STAINLESS STEEL TUBE SIZE VANSTONE STUB



926P - VANSTONE FLANGES (PIPE SIZE)

125-150# ANSI FLANGE, 1/2" THK. PER B16.5 SPECS.
T-321 STAINLESS STEEL PIPE SIZE VANSTONE STUB



FLG. SIZE	A	B	C	C/S FLANGE	T-304 S/S FLANGE
2"	2.04	1.50	0.050	926-0200T	926-0200HT
2-1/2"	2.54	1.50	0.050	926-0250T	926-0250HT
3"	3.04	1.50	0.050	926-0300T	926-0300HT
3-1/2"	3.54	1.50	0.050	926-0350T	926-0350HT
4"	4.04	1.50	0.050	926-0400T	926-0400HT
5"	5.04	1.50	0.050	926-0500T	926-0500HT
6"	6.04	1.50	0.050	926-0600T	926-0600HT
8"	8.06	1.50	0.062	926-0800T	926-0800HT
10"	10.06	1.50	0.062	926-1000T	926-1000HT
12"	12.06	1.50	0.062	926-1200T	926-1200HT
14"	14.06	1.50	0.062	926-1400T	926-1400HT
16"	16.06	1.50	0.062	926-1600T	926-1600HT
18"	18.06	1.50	0.062	926-1800T	926-1800HT
20"	20.06	1.50	0.074	926-2000T	926-2000HT
22"	22.06	1.50	0.074	926-2200T	926-2200HT
24"	24.06	1.50	0.074	926-2400T	926-2400HT

FLG. SIZE	A	B	C	C/S FLANGE	T-304 S/S FLANGE
2"	2.42	1.50	0.050	926-0200P	926-0200HP
2-1/2"	2.92	1.50	0.050	926-0250P	926-0250HP
3"	3.54	1.50	0.050	926-0300P	926-0300HP
3-1/2"	4.04	1.50	0.050	926-0350P	926-0350HP
4"	4.54	1.50	0.050	926-0400P	926-0400HP
5"	5.62	1.50	0.050	926-0500P	926-0500HP
6"	6.67	1.50	0.050	926-0600P	926-0600HP
8"	8.67	1.50	0.062	926-0800P	926-0800HP
10"	10.81	1.50	0.062	926-1000P	926-1000HP
12"	12.81	1.50	0.062	926-1200P	926-1200HP
14"	14.06	1.50	0.062	926-1400P	926-1400HP
16"	16.06	1.50	0.062	926-1600P	926-1600HP
18"	18.06	1.50	0.062	926-1800P	926-1800HP
20"	20.06	1.50	0.074	926-2000P	926-2000HP
22"	22.06	1.50	0.074	926-2200P	926-2200HP
24"	24.06	1.50	0.074	926-2400P	926-2400HP

NOTES:

- Standard Vanstone Stub Ends are 18 Gauge T-321 Stainless Steel.
- Heavier Gauge Materials are Available.
- T-304 S/S, T-316 S/S and Inconel 625 Vanstones are Available on Request.

