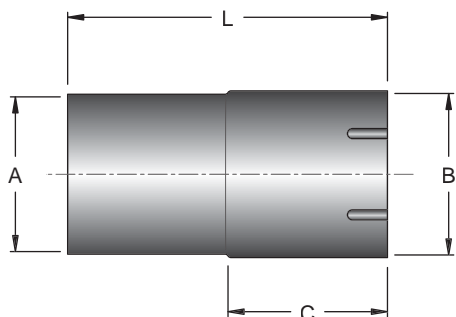
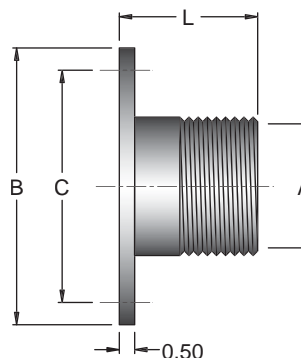


901T - TUBE X SLOTTED CUFF (TUBE)
901P - TUBE X SLOTTED CUFF (PIPE)



SIZE	I.D.		L		
	A	B		CARBON STEEL	T-304 S/S
1-1/2"	1.540	4.00	8.00	901-0150T	901-0150HT
1-1/2"	1.940	4.00	8.00	901-0150P	901-0150HP
2"	2.040	4.00	8.00	901-0200T	901-0200HT
2"	2.415	4.00	8.00	901-0200P	901-0200HP
2-1/2"	2.540	4.00	8.00	901-0250T	901-0250HT
2-1/2"	2.915	4.00	8.00	901-0250P	901-0250HP
3"	3.040	4.00	8.00	901-0300T	901-0300HT
3"	3.540	4.00	8.00	901-0300P	901-0300HP
3-1/2"	3.540	4.00	8.00	901-0350T	901-0350HT
3-1/2"	4.040	4.00	8.00	901-0350P	901-0350HP
4"	4.040	4.00	8.00	901-0400T	901-0400HT
4"	4.540	4.00	8.00	901-0400P	901-0400HP
5"	5.040	4.00	8.00	901-0500T	901-0500HT
5"	5.603	4.00	8.00	901-0500P	901-0500HP
6"	6.040	4.00	8.00	901-0600T	901-0600HT
6"	6.665	4.00	8.00	901-0600P	901-0600HP
8"	8.060	4.00	8.00	901-0800T	901-0800HT
8"	8.685	4.00	8.00	901-0800P	901-0800HP
10"	10.060	6.00	12.00	901-1000T	901-1000HT
10"	10.810	6.00	12.00	901-1000P	901-1000HP
12"	12.060	6.00	12.00	901-1200T	901-1200HT
12"	12.810	6.00	12.00	901-1200P	901-1200HP

903 - MALE NPT X FLANGE

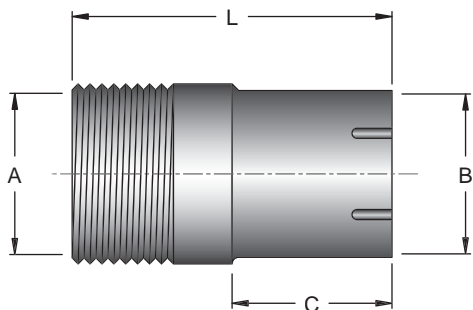


NPT	FLANGE		C	L	CARBON	
	A	SIZE			STEEL	T-304 S/S
1-1/2"	1-1/2"	5.00	3.88	2.50	903-0150	903-0150H
1-1/2"	2"	6.00	4.75	2.50	903-0150-2	903-0150-2H
2"	2"	6.00	4.75	3.00	903-0200	903-0200H
2"	2-1/2"	7.00	5.50	3.00	903-0200-2.5	903-0200-2.5H
2-1/2"	2-1/2"	7.00	5.50	3.50	903-0250	903-0250H
2-1/2"	3"	7.50	6.00	3.50	903-0250-3	903-0250-3H
3"	3"	7.50	6.00	3.50	903-0300	903-0300H
3"	4"	9.00	7.50	3.50	903-0300-4	903-0300-4H
3-1/2"	4"	9.00	7.50	4.50	903-0350-4	903-0350-4H
3-1/2"	5"	10.00	8.50	4.50	903-0350-5	903-0350-5H
4"	4"	9.00	7.50	4.50	903-0400	903-0400H
4"	5"	10.00	8.50	4.50	903-0400-5	903-0400-5H
5"	5"	10.00	8.50	4.50	903-0500	903-0500H
5"	6"	11.00	9.50	4.50	903-0500-6	903-0500-6H
6"	6"	11.00	9.50	4.50	903-0600	903-0600H
6"	8"	13.50	11.75	4.50	903-0600-8	903-0600-8H
8"	8"	13.50	11.75	4.50	903-0800	903-0800H
8"	10"	16.00	14.25	4.50	903-0800-10	903-0800-10H

NOTES:

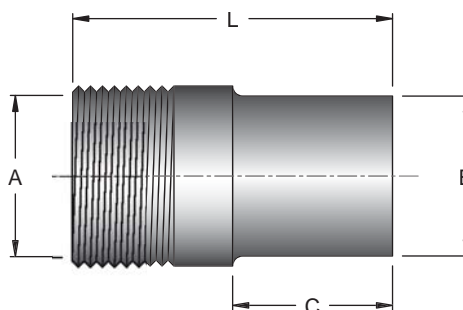
- Standard Flange 125/150# ANSI
- Add "U" for Cummins Inlet Flange, "D" for Detroit Inlet Flange, and "C" for Cat Inlet Flange to the End of the Part Number.

902 - MALE NPT X SLOTTED CUFF (TUBE)



SIZE	I.D.		L		
	A	B		CARBON STEEL	T-304 S/S
1-1/2"	1.540	4.00	8.00	902-0150	902-0150H
2"	2.040	4.00	8.00	902-0200	902-0200H
2-1/2"	2.540	4.00	8.00	902-0250	902-0250H
3"	3.040	4.00	8.00	902-0300	902-0300H
3-1/2"	3.540	4.00	8.00	902-0350	902-0350H
4"	4.040	4.00	8.00	902-0400	902-0400H
5"	5.040	4.00	8.00	902-0500	902-0500H
6"	6.040	4.00	8.00	902-0600	902-0600H
8"	8.060	4.00	8.00	902-0800	902-0800H

904 - MALE NPT X TUBE



SIZE	I.D.		L		
	A	B		CARBON STEEL	T-304 S/S
1-1/2"	1.50	4.00	8.00	904-0150	904-0150H
2"	2.00	4.00	8.00	904-0200	904-0200H
2-1/2"	2.50	4.00	8.00	904-0250	904-0250H
3"	3.00	4.00	8.00	904-0300	904-0300H
3-1/2"	3.50	4.00	8.00	904-0350	904-0350H
4"	4.00	4.00	8.00	904-0400	904-0400H
5"	5.00	4.00	8.00	904-0500	904-0500H
6"	6.00	4.00	8.00	904-0600	904-0600H
8"	8.00	4.00	8.00	904-0800	904-0800H