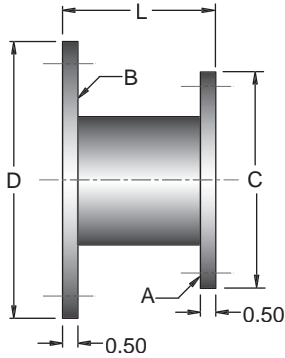


913 - FLANGE X INCREASING FLANGE

125/150# ANSI FIXED FLANGE
TUBE / ROLLED CYLINDER
125/150# ANSI FIXED FLANGE (LARGER)

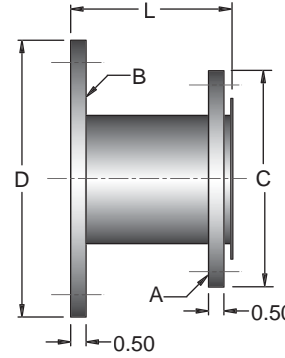


NOTES: See Page 31 For Flange Specifications.

Inlet Flanges can be Changed to Cat, Cummins, or Detroit Flanges.

914 - FLOATING FLANGE X INCREASING FLANGE

125/150# ANSI FLOATING FLANGE
TUBE / ROLLED CYLINDER
125/150# ANSI FIXED FLANGE (LARGER)



FLG. A	FLG. B	C	D	L	CARBON	
					STEEL	T-304 S/S
3"	4"	7.50	9.00	5.00	913-0300-4	913-0300-4H
3"	5"	7.50	10.00	5.00	913-0300-5	913-0300-5H
3"	6"	7.50	11.00	5.00	913-0300-6	913-0300-6H
3-1/2"	5"	8.50	10.00	5.00	913-0350-5	913-0350-5H
3-1/2"	6"	8.50	11.00	5.00	913-0350-6	913-0350-6H
3-1/2"	8"	8.50	13.50	5.00	913-0350-8	913-0350-8H
4"	5"	9.00	10.00	5.00	913-0400-5	913-0400-5H
4"	6"	9.00	11.00	5.00	913-0400-6	913-0400-6H
4"	8"	9.00	13.50	5.00	913-0400-8	913-0400-8H
5"	6"	10.00	11.00	5.00	913-0500-6	913-0500-6H
5"	8"	10.00	13.50	5.00	913-0500-8	913-0500-8H
5"	10"	10.00	16.00	5.00	913-0500-10	913-0500-10H
6"	8"	11.00	13.50	5.00	913-0600-8	913-0600-8H
6"	10"	11.00	16.00	5.00	913-0600-10	913-0600-10H
6"	12"	11.00	19.00	5.00	913-0600-12	913-0600-12H
8"	10"	13.50	16.00	5.00	913-0800-10	913-0800-10H
8"	12"	13.50	19.00	5.00	913-0800-12	913-0800-12H
8"	14"	13.50	21.00	5.00	913-0800-14	913-0800-14H
10"	12"	16.00	19.00	5.00	913-1000-12	913-1000-12H
10"	14"	16.00	21.00	5.00	913-1000-14	913-1000-14H
10"	16"	16.00	23.50	5.00	913-1000-16	913-1000-16H
12"	14"	19.00	21.00	5.00	913-1200-14	913-1200-14H
12"	16"	19.00	23.50	5.00	913-1200-16	913-1200-16H
12"	18"	19.00	25.00	5.00	913-1200-18	913-1200-18H
14"	16"	21.00	23.50	5.00	913-1400-16	913-1400-16H
14"	18"	21.00	25.00	5.00	913-1400-18	913-1400-18H
14"	20"	21.00	27.50	5.00	913-1400-20	913-1400-20H
16"	18"	23.50	25.00	5.00	913-1600-18	913-1600-18H
16"	20"	23.50	27.50	5.00	913-1600-20	913-1600-20H
16"	22"	23.50	29.50	5.00	913-1600-22	913-1600-22H
18"	20"	25.00	27.50	5.00	913-1800-20	913-1800-20H
18"	22"	25.00	29.50	5.00	913-1800-22	913-1800-22H
18"	24"	25.00	32.00	5.00	913-1800-24	913-1800-24H
20"	22"	27.50	29.50	5.00	913-2000-22	913-2000-22H
20"	24"	27.50	32.00	5.00	913-2000-24	913-2000-24H
20"	26"	27.50	34.25	5.00	913-2000-26	913-2000-26H
22"	24"	29.50	32.00	5.00	913-2200-24	913-2200-24H
22"	26"	29.50	34.25	5.00	913-2200-26	913-2200-26H
22"	28"	29.50	36.50	5.00	913-2200-28	913-2200-28H
24"	26"	32.00	34.25	5.00	913-2400-26	913-2400-26H
24"	28"	32.00	36.50	5.00	913-2400-28	913-2400-28H
24"	30"	32.00	38.75	5.00	913-2400-30	913-2400-30H

FLG. A	FLG. B	C	D	L	CARBON	
					STEEL	T-304 S/S
3"	4"	7.50	9.00	5.00	914-0300-4	914-0300-4H
3"	5"	7.50	10.00	5.00	914-0300-5	914-0300-5H
3"	6"	7.50	11.00	5.00	914-0300-6	914-0300-6H
3-1/2"	5"	8.50	10.00	5.00	914-0350-5	914-0350-5H
3-1/2"	6"	8.50	11.00	5.00	914-0350-6	914-0350-6H
3-1/2"	8"	8.50	13.50	5.00	914-0350-8	914-0350-8H
4"	5"	9.00	10.00	5.00	914-0400-5	914-0400-5H
4"	6"	9.00	11.00	5.00	914-0400-6	914-0400-6H
4"	8"	9.00	13.50	5.00	914-0400-8	914-0400-8H
5"	6"	10.00	11.00	5.00	914-0500-6	914-0500-6H
5"	8"	10.00	13.50	5.00	914-0500-8	914-0500-8H
5"	10"	10.00	16.00	5.00	914-0500-10	914-0500-10H
6"	8"	11.00	13.50	5.00	914-0600-8	914-0600-8H
6"	10"	11.00	16.00	5.00	914-0600-10	914-0600-10H
6"	12"	11.00	19.00	5.00	914-0600-12	914-0600-12H
8"	10"	13.50	16.00	5.00	914-0800-10	914-0800-10H
8"	12"	13.50	19.00	5.00	914-0800-12	914-0800-12H
8"	14"	13.50	21.00	5.00	914-0800-14	914-0800-14H
10"	12"	16.00	19.00	5.00	914-1000-12	914-1000-12H
10"	14"	16.00	21.00	5.00	914-1000-14	914-1000-14H
10"	16"	16.00	23.50	5.00	914-1000-16	914-1000-16H
12"	14"	19.00	21.00	5.00	914-1200-14	914-1200-14H
12"	16"	19.00	23.50	5.00	914-1200-16	914-1200-16H
12"	18"	19.00	25.00	5.00	914-1200-18	914-1200-18H
14"	16"	21.00	23.50	5.00	914-1400-16	914-1400-16H
14"	18"	21.00	25.00	5.00	914-1400-18	914-1400-18H
14"	20"	21.00	27.50	5.00	914-1400-20	914-1400-20H
16"	18"	23.50	25.00	5.00	914-1600-18	914-1600-18H
16"	20"	23.50	27.50	5.00	914-1600-20	914-1600-20H
16"	22"	23.50	29.50	5.00	914-1600-22	914-1600-22H
18"	20"	25.00	27.50	5.00	914-1800-20	914-1800-20H
18"	22"	25.00	29.50	5.00	914-1800-22	914-1800-22H
18"	24"	25.00	32.00	5.00	914-1800-24	914-1800-24H
20"	22"	27.50	29.50	5.00	914-2000-22	914-2000-22H
20"	24"	27.50	32.00	5.00	914-2000-24	914-2000-24H
20"	26"	27.50	34.25	5.00	914-2000-26	914-2000-26H
22"	24"	29.50	32.00	5.00	914-2200-24	914-2200-24H
22"	26"	29.50	34.25	5.00	914-2200-26	914-2200-26H
22"	28"	29.50	36.50	5.00	914-2200-28	914-2200-28H
24"	26"	32.00	34.25	5.00	914-2400-26	914-2400-26H
24"	28"	32.00	36.50	5.00	914-2400-28	914-2400-28H
24"	30"	32.00	38.75	5.00	914-2400-30	914-2400-30H